

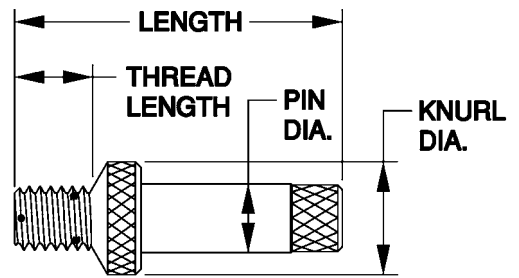
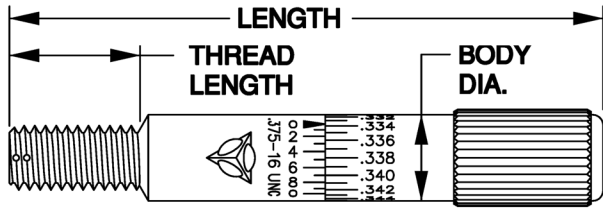


# MULTI-BALL™

## Thread Inspection Products

### STANDARD CONFIGURATIONS

(OTHER CONFIGURATIONS AVAILABLE)



180°

MICROMETER



120°

LOCATION GAGE

APPROXIMATE DIMENSIONS INCHES [MILLIMETERS]				NOMINAL THREAD SIZE	APPROXIMATE DIMENSIONS INCHES [MILLIMETERS]			
BODY DIA.	LENGTH	WEIGHT OZS. [GRAMS]	THREAD LENGTH		THREAD LENGTH	PIN DIA.	LENGTH	KNURL DIA.
.500 [12.70]	3.10 [78.7]	2.8 [78]	.38 [9.6]	.190-24 UNC .190-32 UNF	.24 [6.1]	.2000 [5.080]	1.40 [35.6]	.49 [12.5]
			.39 [10]	M5 x 0.8	.24 [6.1]			
			.43 [11]	.216-24 UNC .216-28 UNF	.27 [6.9]			
			.47 [12]	M6 x 1	.30 [7.6]			
			.50 [12.7]	.250-20 UNC .250-28 UNF	.31 [7.9]			
			.63 [16]	.312-18 UNC .312-24 UNF	.38 [9.6]			
			.63 [16]	M8 x 1.25 M8 x 1	.38 [9.6]			
			.75 [19]	.375-16 UNC .375-24 UNF	.45 [11.4]			
.600 [15.24]	3.50 [88.9]	4.5 [127]	.78 [20]	M10 x 1.5 M10 x 1.25	.47 [11.9]	.4000 [10.160]	1.80 [45.720]	.68 [17.3]
			.87 [22.2]	.437-14 UNC .437-20 UNF	.51 [12.9]			
			.95 [24]	M12 x 1.75 M12 x 1.25	.55 [13.9]			
			1.00 [25.4]	.500-13 UNC .500-20 UNF	.58 [14.7]			
.800 [20.32]	4.00 [101.6]	9.1 [259]	1.10 [28]	M14 x 2 M14 x 1.5	.63 [16]	.5000 [12.700]	2.00 [50.8]	.77 [19.7]
			1.12 [28.6]	.562-12 UNC .562-18 UNF	.63 [16]			
			1.25 [31.8]	.625-11 UNC .625-18 UNF	.70 [17.7]			
			1.26 [32]	M16 x 2 M16 x 1.5	.70 [17.7]			
			1.42 [36]	M18 x 1.5	.78 [19.8]			
			1.50 [38.1]	.750-10 UNC .750-16 UNF	.81 [20.5]			
			1.57 [40]	M20 x 2.5 M20 x 1.5	.84 [21.3]			
1.000 [25.40]	4.50 [114.3]	16 [455]	1.73 [44]	M22 x 2.5 M22 x 1.5	.90 [22.8]	.8000 [20.320]	2.40 [60.9]	1.09 [27.6]
			1.75 [44.5]	.875- 9 UNC .875-14 UNF	.90 [22.8]			
			1.89 [48]	M24 x 3 M24 x 2	.97 [24.6]			
			2.00 [50.8]	1.000- 8 UNC 1.000-12 UNF	.99 [25.2]			

AVAILABLE FROM:

### TRUE PRECISION CORPORATION

831 South Post Road, Indianapolis, IN USA 46239

Tel: 317.899.0899 Fax: 317.899.5374

Home Page: <http://www.TruePrecisionCorp.com>

E-Mail: [sales@TruePrecisionCorp.com](mailto:sales@TruePrecisionCorp.com)